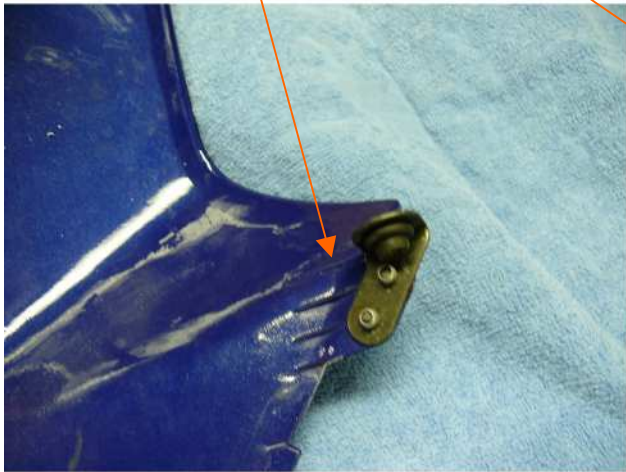


Repair of broken mounting tab on headlight housing. (Honda NX250 Dual Purpose bike)

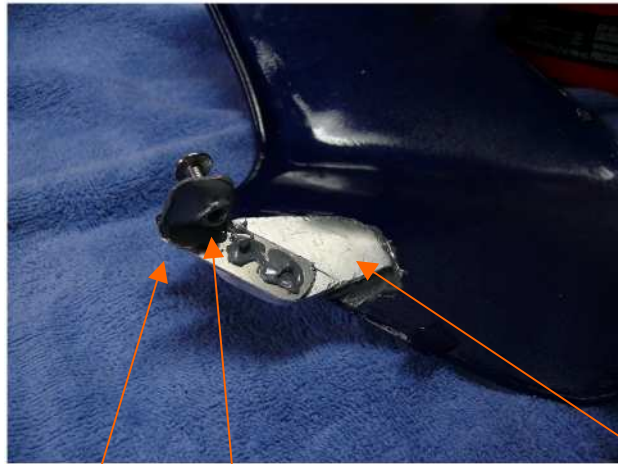
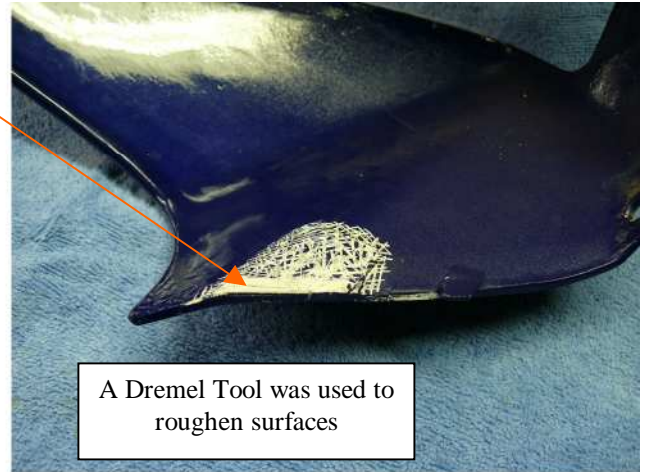
Epoxy used.. "Fast Cure Epoxy Cups" by Permatex Item #21427

Caution: Epoxy starts to harden in about one minute so work fast to apply.

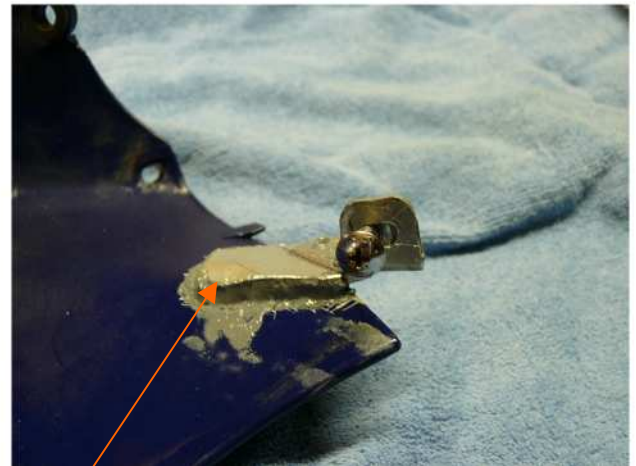
The good Mounting Tab on **right** side of headlight housing
Note plastic protrusion missing on this side



Broken Mounting Tab on **left** side of headlight housing
Back side roughened up to hold epoxy

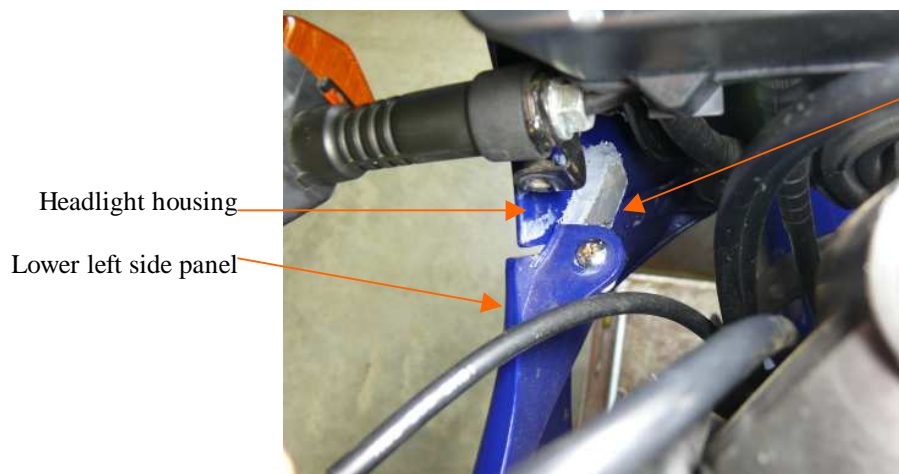


Metal bracket with nut epoxied to bottom side



Aluminum plate epoxied to housing. Top view showing screw.
Before painting

This shows left side of housing mounted to lower left side panel.
Left unpainted to show repair in this picture.
(Was finally painted to match color of bike panels.)

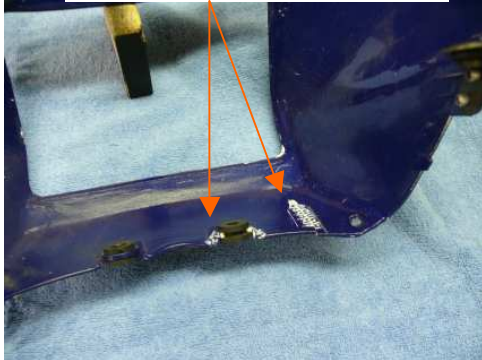


Repair of Cracked headlight housing. (Honda NX250 Dual Purpose bike)

Epoxy used.. "Fast Cure Epoxy Cups" by Permatex Item #21427

Caution: Epoxy starts to harden in about one minute so work fast to apply

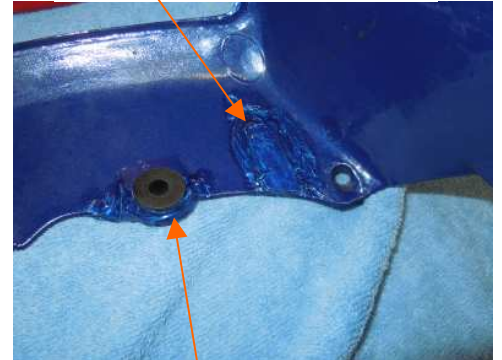
Back side showing crack
Roughened up for epoxy



Outside showing crack



Aluminum plate epoxied to plastic.
Roughen surface of plate as well.
Shown painted.



Tip: To hold edges of crack together while epoxy sets
use a stationary clip.

The kind with wire handles to open the jaws.

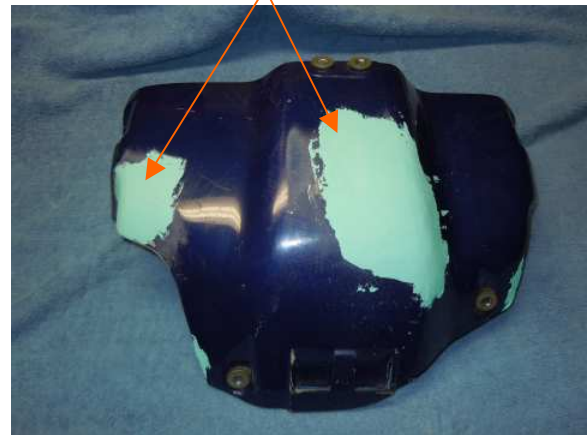
Grommet tab repair

Skid Plate Repair (Honda NX250 Dual Purpose bike)

Brush Guard (Bottom)
Epoxy patched



Brush Guard (Outside)
Body Putty sanded



First coat of paint



Custom matched paint mixed at local auto
parts store.

Left original color Right repainted guard.

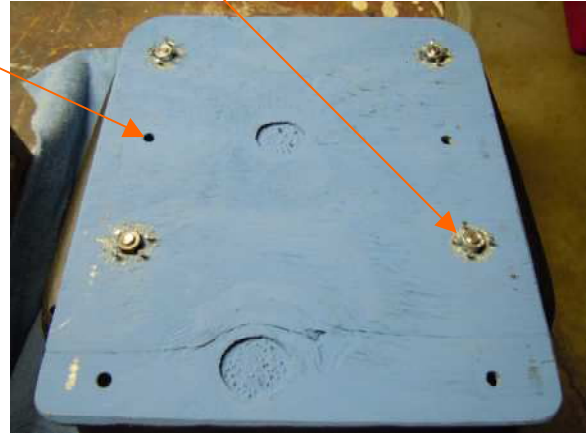


Rear Trunk extender. (Honda NX250 Dual Purpose bike)

Rear Luggage rack on NX250
Adaptor "board" Mtg. Holes.



Rear view of Adaptor "Board"
Nuts for trunk mounting



Detail of nuts epoxied to board
Roughened surfaces on board and nut



Epoxied nuts
Small nails to help hold epoxy to board and nut



Bottom of Adaptor "Board"
Before painting black to match trunk color



Final mounting



Offset to allow seat removal